

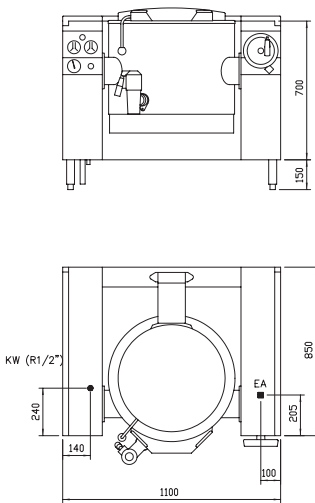


Electric tilting quick boiling kettle

- ◆ Time saving and gentle to produce due to shorter heating up times.
- ◆ The tilting angle of the kettle, more than 90°, makes pouring, emptying and cleaning much easier.
- ◆ Various fittings and displays are integrated into the side frames.
- ◆ A greater pouring height allows easier emptying into large containers.
- ◆ Motorised or manual tilting.
- ◆ Supplied ready for connection to a power optimising system.

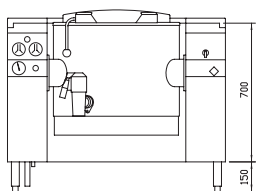
Illustration: Electric tilting boiling kettle 100 litres with mixing tap (optional accessories).

ELECTRIC TILTING QUICK BOILING KETTLE 60 L MANUAL TILTING VAPRO



- Model No:** 2023003 B
- Dimensions:** 1100 x 850 mm, 700 mm corpus height
- Inside kettle:** 500 mm diameter, 378 mm deep, manufactured from one piece, material 1.4404 (316S11)
- Heating up time:** 21 min. (according to DIN 18855)
- Description:**
- Housing made completely of chrome nickel steel (1.4301) / (304)
 - Tightly welded top plate with lateral drain channels for easy cleaning
 - Low energy and water consumption but highly efficient due to a double jacketed kettle with separate VAPRO steam generator.
 - Short heating up times with VAPRO rapid steam system
 - 3 cooking programmes as standard (light simmer, medium simmer and strong boil)
 - Because of the steam generator with utility water monitor and automatic water level regulation the appliance is constantly ready for use.
 - Double walled hinged lid with spring loaded swivel joints as standard.
 - Ideal kettle positioning prevents spills and guarantees that the kettle is fully emptied even into high containers.
 - Supplied ready for connection to a power optimising system.
- Electrical equipment:** Power control switch, end switch, thermostat, safety temperature monitor, control lamps, tubular heating elements, pilot heating elements, contactor, water solenoid valve, water level regulator with electrode, mains connection, IPX5.
- Fittings:** Air valve, safety valve.
- Connected load:** 15,8 kW 3NPE AC 400V
- Heat emission:** sensitive: 553 W latent: 3160 W
- Accessories:** Drain filter
- Optional accessories:**
- 216 286 2 CNS cooking inserts, perforation 10 mm diameter
 - 216 285 1 pair of lifting hooks
 - 845 027 1 mixing tap with R 3/4" outlet
 - 895 034 1 measuring rod for 60l kettle

ELECTRIC TILTING QUICK BOILING KETTLE 60 L MANUAL TILTING VAPRO with Ecocontrol electronic regulation



- Model No:** 2023021
- As above, (model no. 2023003B) but with EcoControl electronic temperature regulator and keypad
- Connected load:** 16,0 kW 3 NPE AC 400 V
- Heat emission:** sensitive: 560 W latent: 3200 W



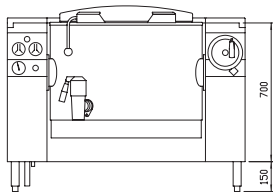
ELECTRIC TILTING QUICK BOILING KETTLE 60 L MOTORISED TILTING VAPRO with Ecocontrol electronic regulation

Model No:

2023022

As above, (model no. 2023004B) but with EcoControl electronic temperature regulator and keypad

For further information refer to page 106 – 108.



Model No:

2023007 B

Dimensions:

1200 x 850 mm, 700 mm corpus height

Inside kettle:

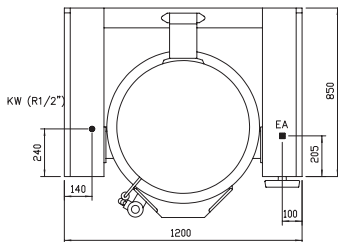
630 mm diameter, 397 mm deep, manufactured from one piece, material 1.4404 (316S11)

Heating up time:

26 min. (according to DIN 18855)

Description:

- Housing made completely of chrome nickel steel (1.4301) / (304)
- Tightly welded top plate with lateral drain channels for easy cleaning
- Low energy and water consumption but highly efficient due to a double jacketed kettle with separate VAPRO steam generator.
- Short heating up times with VAPRO rapid steam system
- 3 cooking programmes as standard (light simmer, medium simmer and strong boiling)
- Because of the steam generator with utility water monitor and automatic water level regulation the appliance is constantly ready for use.
- Double walled hinged lid with spring loaded swivel joints as standard.
- Ideal kettle positioning prevents spills and guarantees that the kettle is fully emptied, even into high containers.
- Supplied ready for connection to a power optimising system.



Electrical equipment:

Power control switch, end switch, thermostat, safety temperature monitor, control lamps, tubular heating elements ,pilot heating elements, contactor, water solenoid valve, water level regulator with electrode, mains connection, IPX5.

Fittings:

Air valve, safety valve.

Connected load:

20.8 kW 3NPE AC 400V

Heat emission:

sensitive: 728 W latent: 4160 W

Accessories:

Drain filter

Optional accessories:

216 281

2 CNS cooking inserts, perforation 10mm diameter

216 285

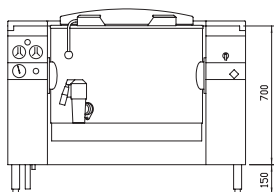
1 pair of lifting hooks

845 027

1 mixing tap with R 3/4" outlet

895 039

1 measuring rod for 60l kettle



ELECTRIC TILTING QUICK BOILING KETTLE 100 L MOTORISED TILTING VAPRO

Model No:

2023008B

As model no. 2023007B but with motorised tilting mechanism with manual control switch

Connected load:

21 kW 3 NPE AC 400 V

Heat emission:

sensitive: 735 W latent: 4200 W

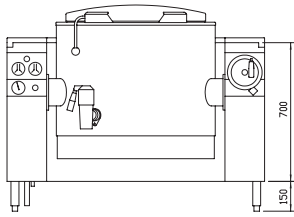
ELECTRIC TILTING QUICK BOILING KETTLE 100 L MOTORISED TILTING VAPRO with Ecocontrol electronic regulation

Model No:

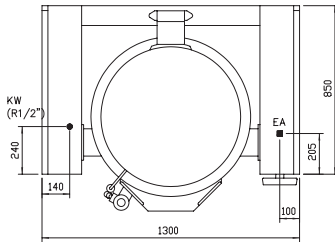
2023024

As above, (model no. 2023008B) but with EcoControl electronic temperature regulator and keypad

For further information refer to page 106 – 108.



Model No: 2023009 B
Dimensions: 1300 x 850 mm, 700 mm corpus height
Inside kettle: 665 mm diameter, 500 mm deep, manufactured from one piece, material 1.4404 (316S11)
Heating up time: 32 min. (according to DIN 18855)
Description:

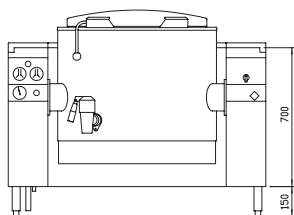


Description:
 – Housing made completely of chrome nickel steel (1.4301) / (304)
 – Tightly welded top plate with lateral drain channels for easy cleaning
 – Low energy and water consumption but highly efficient due to a double jacketed kettle with separate VAPRO steam generator.
 – Short heating up times with VAPRO pressure steam system
 – 3 cooking programmes as standard (light simmer, medium simmer and strong boil)
 – Because of the steam generator with utility water monitor and automatic water level regulation the appliance is constantly ready for use.
 – Double walled hinged lid with spring loaded swivel joints as standard.
 – Ideal kettle positioning prevents spills and guarantees that the kettle is fully emptied, even into high containers.
 – Supplied ready for connection to a power optimising system.

Electrical equipment: Power control switch, end switch, thermostat, safety temperature monitor, control lamps, tubular heating elements, pilot heating elements, contactor, water solenoid valve, water level regulator with electrode, mains connection, IPX5.

Fittings: Air valve, safety valve.
Connected load: 26 kW 3NPE AC 400V
Heat emission: sensitive: 1050 W latent: 6000 W
Accessories: Drain filter

Optional accessories:
 216 287 2 CNS cooking inserts, perforation 10mm diameter
 216 285 1 pair of lifting hooks
 845 027 1 mixing tap with R 3/4" outlet
 204 934 1 measuring rod for 150l kettle

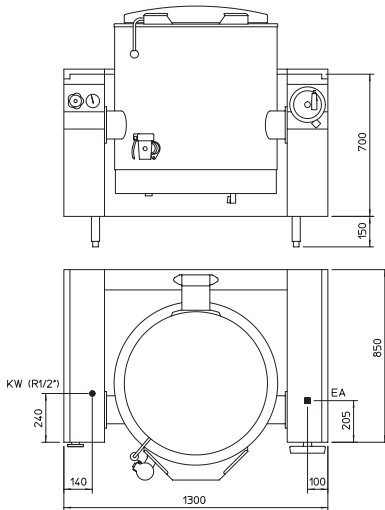


Model No: 20230 010 B
 As model no. 2023009B but with motorised tilting mechanism with manual control switch
Connected load: 26 kW 3 NPE AC 400 V
Heat emission: sensitive: 910 W latent: 5200 W

ELECTRIC TILTING QUICK BOILING KETTLE 150 L MOTORISED TILTING VAPRO

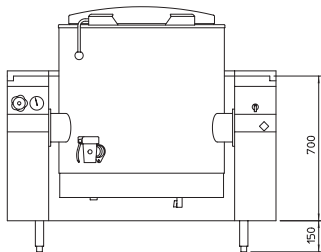
ELECTRIC TILTING QUICK BOILING KETTLE 150 L MOTORISED TILTING VAPRO with Ecocontrol electronic regulation

Model No: 2023026
 As above, (model no. 2023010B) but with EcoControl electronic temperature regulator and keypad
For further information refer to page 106 – 108.



ELECTRIC TILTING QUICK BOILING KETTLE 200 L MANUAL TILTING VAPRO

Model No:	2023017B
Dimensions:	1300 x 850 mm, 700 mm corpus height
Inside kettle:	Ø 665 mm, 645 mm deep
	Manufactured from one piece, material 1.4404 (316S11)
Heating up time:	42 min. (according to DIN 18855)
Description:	Housing made completely of chrome nickel steel (1.4301) / (304) Tightly welded top plate with lateral drain channels for easy cleaning Double-jacketed kettle with separate VAPRO steam generator – for low energy and energy consumption and high efficiency Short heating up times with VAPRO rapid steam system 3 cooking programmes as standard (light simmering, medium simmering and strong boiling) Constant operational readiness due to the steam generator with process water monitoring and automatic water level regulation Double-walled hinged lid with springloaded swivel joint as standard Ideal kettle positioning prevents spillage and ensures that the kettle is completely emptied even into high containers Supplied ready for connection to a power optimising system.
Electrical equipment:	Power control switch, limit switch, thermostat, safety temperature thermostat, control lamps, tubular heating elements, pilot heating elements, contactor, water solenoid valve, water level regulator with electrode, mains connection, IPX 5
Fittings:	Air valve, safety valve
Connected load:	25.8 kW 3 NPE AC 400 V
Heat emission:	sensitive: 903 W latent: 5160 W
Accessories:	1 drain filter
<i>Optional accessories:</i> 846 096	1 mixer tap with outlet R ¾" (DN 20)



ELECTRIC TILTING QUICK BOILING KETTLE 200 L MOTORISED TILTING VAPRO

Model No:	2023018B
	As above (model No. 2023017B), however, with motorised tilting mechanism and manual control switch
Connected load:	26 kW 3 NPE AC 400 V
Heat emission:	sensitive: 910 W latent: 5200 W



ELECTRIC TILTING QUICK BOILING KETTLE 200 L MOTORISED TILTING VAPRO with EcoControl electronic regulation

Model No:	2023028
	As above (model No. 2023018B), however, with EcoControl electronic temperature regulation and membrane keypad